

## SITUATION OVERVIEW<sup>1</sup>

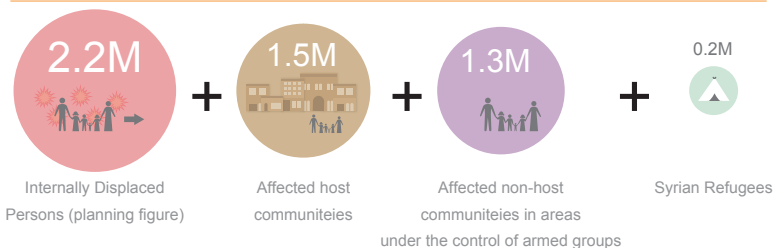
An estimate 2.2 million people have been displaced across Iraq since January 2014. Many fled their homes with very few possessions. In addition, 1.5 million Iraqis in host communities are in need of assistance due to the increased demand of IDPs for essential public services and livelihoods. Moreover, 1.3 million people who are not displaced or hosting families but are living in areas outside government control and under the poverty line are particularly vulnerable.

## HUMANITARIAN PROFILE<sup>1</sup>



# 5.2 MILLION

people in need of humanitarian assistance



## STRATEGIC RESPONSE PLAN (SRP) 2014-2015<sup>2</sup>



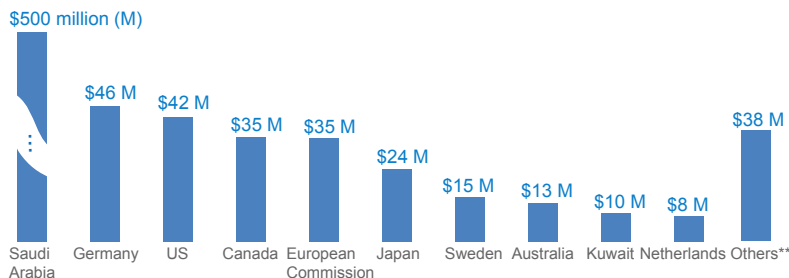
# US\$2.2 BILLION

total SRP requirements

**\$792 million funded (36%)**

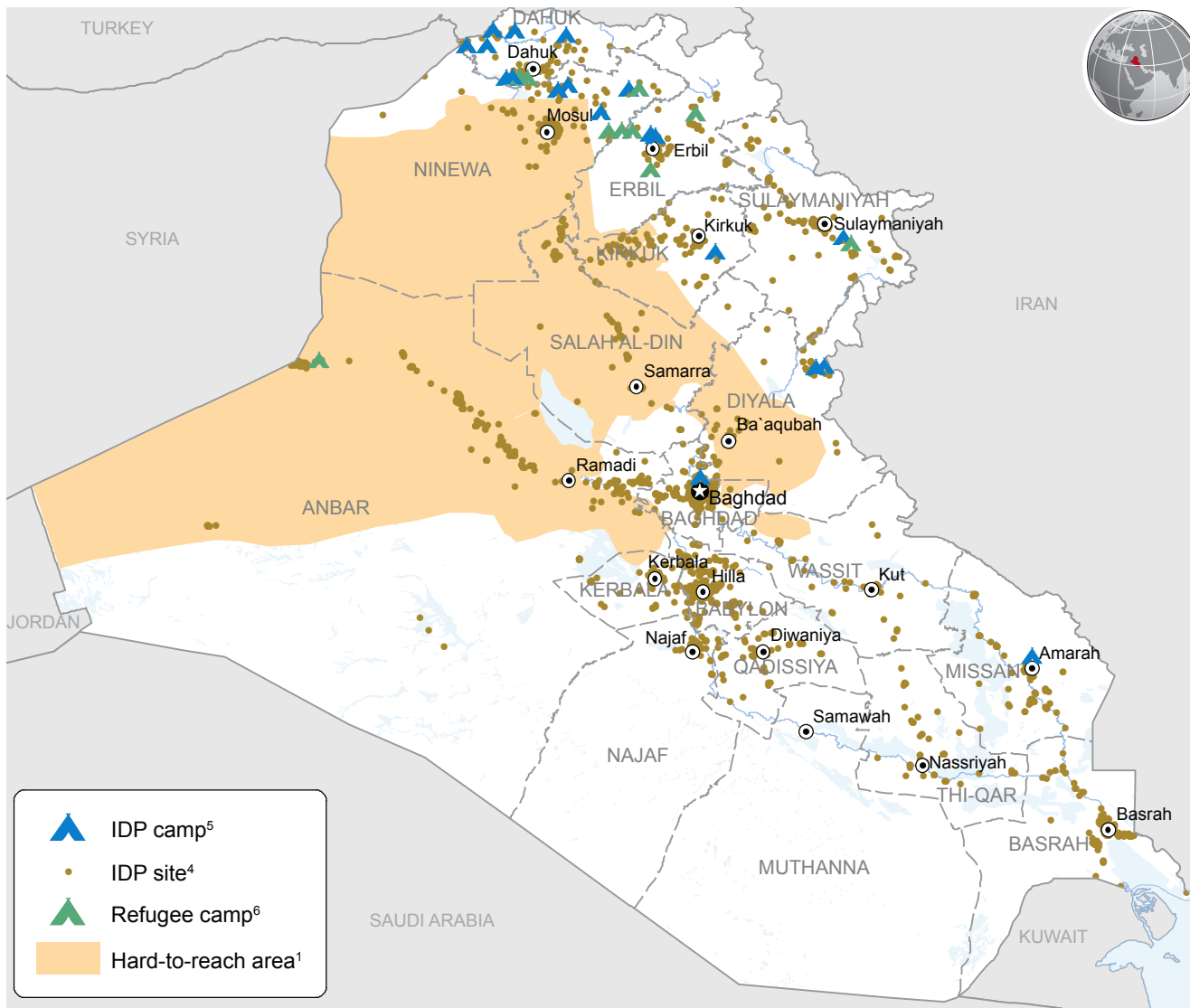
**64% unmet**

Total Funding\* per Donor (to projects listed in the SRP)  
Report as of 27-January-2015 (Appeal launched on 28-February-2014)

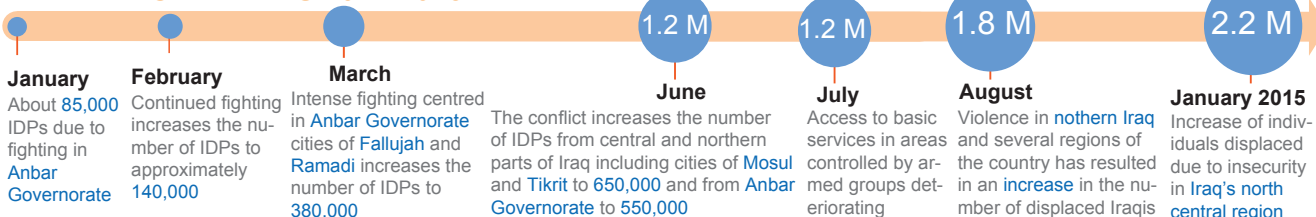


\* CERF: \$26 million

\*\* including: United Kingdom, Norway, Switzerland, Denmark, Finland, France, Austria, Italy, Luxembourg, Korea, Turkey, New Zealand



## TIMELINE OF EVENTS 2014-2015<sup>3</sup>



The boundaries and names shown and the designations used on this map do not imply official endorsement or acceptance by the United Nations. The data for this map has a limited number of sources, including parties to the conflict. The data has not been independently verified and is subject to error or omission, deliberate or otherwise by the various sources. Due to the fluidity of the conflict, control status is likely to change.